

## Important Safeguards

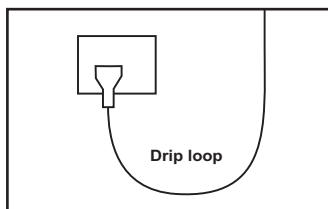
This appliance is not intended for use by children or infirm persons without supervision. Young children should be supervised to ensure that they do not play with the appliance.

**Warning: To guard against injury, basic safety precautions should be observed, including the following:**

1. Read and follow all safety instructions before using this appliance.
2. Danger: To avoid possible electric shocks, special care should be taken since water is employed in the use of terrarium equipment. For each of the following situations do not attempt repairs yourself. Return the appliance to an authorised service facility for service or discard the appliance.
  - a) If the light falls into water, do not reach for it, unplug it and then retrieve it. If the electrical components of the appliance get wet, unplug the appliance immediately (non immersible equipment only).
  - b) If the terrarium shows any sign of abnormal water leakage, immediately unplug all appliances from the power source.
  - c) Carefully examine the light after installation. It should not be plugged in when there is water on parts which are not intended to be wet.
  - d) Do not operate any terrarium product if it has a damaged cord or plug, or if it is malfunctioning, or dropped or damaged in any manner.
  - e) If the external flexible cable or cord of this luminaire is damaged, it must be replaced by the manufacturer, it's service agent or similarly qualified persons in order to avoid a possible hazard.

A "drip loop" (See the diagram) should be arranged by the user for each cord connecting a terrarium component to a receptacle. The drip loop is the part of the cord below the level of the receptacle or the connector if an extension cord is used. It is used to prevent water traveling along the cord and coming in contact with the receptacle. If the plug or receptacle does get wet, do not unplug the appliance. Disconnect the fuse or circuit breaker that supplies the power to the appliance, then unplug and examine for presence of water in the receptacle.

3. Close supervision is necessary when the appliance is used by or near children.
4. Always unplug the light from the electrical outlet, when not in use, before putting on or taking off parts, before any type of maintenance, or cleaning. Never yank the cord to pull it from the outlet. Grasp the plug and unplug to disconnect.
5. Do not use the light for reasons other than the intended use. The use of attachments that are not recommended or sold by the light manufacturer may cause the product to be unsafe. This is not recommended.
6. Do not install or store the light where it will be exposed to weather or temperatures below freezing.
7. Make sure any component mounted on a tank is securely installed before operating it.
8. Read and observe all the important notices on the light.
9. Ensure input voltage is the same voltage as your local power supply.
10. If an extension cord is necessary, a cord with a proper rating should be used. Care should be taken to arrange the cord so that it will not be tripped or pulled.
11. Ensure your hand is dry when turning the power switch on/off and when inserting/removing the plug from the receptacle.
12. If you are in any doubt about the electrical installation or safety of this product you must consult a qualified electrician.



**For Guarantee Conditions, please refer to the Guarantee conditions listed at the back of this instruction sheet.**

## Before First Use / Preparation

Read and follow all the instructions, even if you feel you are familiar with the product and find a place to keep the instructions handy for future reference. Your attention is drawn particularly to the sections concerning "IMPORTANT SAFEGUARDS" and the "REPTILE ONE GUARANTEE". Please ensure you return your original purchase receipt in the event that guarantee service is required.

Carefully unpack the light making sure you keep all the packing material until all the parts of the product have been found and the product has been assembled.

This product is shipped to you in a factory sealed carton. Should the product malfunction in any way or if the unit is damaged and requires replacement, contact the retailer where the product was purchased for inspection.

## Hints & Tips for Best Results

### Lighting:

Duplicate normal photo time of twelve hours of light and twelve hours of nocturnal lighting if required. For best UV results, ensure animal has a basking site minimum 300mm from light tube.

We recommend replacing the fluorescent tube once every twelve months based on the light being used for an 12 hour period daily, as the spectrum of light changes over time.

## Trouble shooting

### LIGHT DOES NOT WORK

1. Ensure the plug is inserted correctly and the switch is in the on position.
2. The starter or florescent tube may require replacing.

## Changing the Tubes

1. Ensure your hands are dry turn off and remove the plug from the receptacle.
2. Remove the light from the terrarium.
3. Unscrew both endcap covers and slide the covers away from the endcaps.
4. With both hands turn the tube either clockwise or anti-clockwise to remove.
5. Remove endcap covers from old tube and place them on the new tube.
6. Insert the new tube into the end caps, and again turn clockwise or anti clockwise to lock the tube in and securely screw the endcap covers in place.
7. Plug the light back into the power receptacle and turn it on to ensure it works before mounting it back on the terrarium.

**Reptile One**



220 - 240V ~ 50HZ



\*Manufactured in China  
Designed in Australia by Reptile One  
Distributed in Australia by:  
**Kong's (Aust.) Pty. Limited**  
48 Williamson Rd Ingleburn  
2565 NSW Australia

Distributed in New Zealand by:  
**Kong's (NZ) Limited**  
52 Glenlyon Avenue Greerton  
Tauranga New Zealand

Distributed in Hong Kong by:  
**Kong's Aquarium Supplies Co., Ltd**  
No 31, 3/F Thriving Industrial Centre  
26-38 Sha Tsui Road Tsuen Wan  
Hong Kong

Distributed in the UK by:  
**Kong's (UK) Limited,**  
C/O Aqua Pacific UK Ltd.  
PO Box 268  
Romsey Hampshire  
SO51 0WW  
United Kingdom

[www.reptileone.com.au](http://www.reptileone.com.au)

© Reptile One and Kong's are registered trademarks.

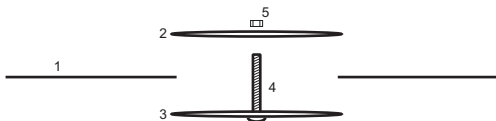
# Adding Electrical Accessories

When adding electrical accessories such as heat mats, heat rocks or water pumps to the ReptEVO enclosure, it is important that power cables do not compromise the security of the enclosure allowing animals to escape.

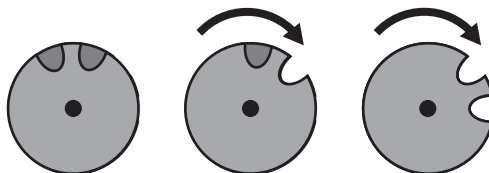
Cables can be secured through a cable entry point in the rear of the mesh in the top of the enclosure. Two separate cables can be fed through this cable entry point.

To fit an electrical accessory to the enclosure:

1. remove the nut which will allow the cable covers to be separated.
2. Turn the cable covers relative to each other as shown until the desired number (1 or 2) cable entry points are open.
3. Feed the plug through the opening between the cable covers.
4. Screw the nut back into position ensuring all parts are secure.



- |                      |          |
|----------------------|----------|
| 1. Mesh cover        | 4. Screw |
| 2. Upper cable cover | 5. Nut   |
| 3. Lower cable cover |          |



## Reptile One - 2 + 1 Year Guarantee

The additional 1 Year Extended Guarantee applies when you REGISTER with Reptile One. See enclosed for details.

### ATTENTION!

### PLEASE RETAIN YOUR PROOF OF PURCHASE AND GUARANTEE

Congratulations on your purchase of a quality Reptile One product. This product will last you many years under normal usage.

#### About this Guarantee

The Manufacturer or Distributor, of Reptile One goods, is collectively known herein as "Reptile One". Please refer to contact details for Reptile One below or on the applicable Reptile One website. Any product that is covered by its own Guarantee (as enclosed with the product) is subject to the conditions of that Guarantee.

The benefits given to the purchaser, under Guarantee, are in addition to all other statutory rights and remedies which the purchaser has in respect of goods under legislation in the applicable country of purchase. This Guarantee shall not affect any such rights and should be read subject to such legislation.

#### 1.0. Terms and Conditions of Guarantee.

- 1.1. Reptile One warrants to the purchaser, for 2 Years from date of original purchase, to repair or replace goods where fault is found due to defective materials or faulty workmanship and where goods do not operate in accordance with the instructions.
- 1.2. All claims for repair or replacement must be made at place of purchase.
- 1.3. The original and dated Proof of Purchase (receipt) must be supplied with all goods claims. Please also provide this Guarantee where possible.
- 1.4. All goods subject to claim under Guarantee should be prepared for transportation in the original packaging or other comparable packaging which offers the same degree of protection.
- 1.5. Where goods are repaired or replaced under Guarantee, these goods are Guaranteed for the remainder of either the original Guarantee or Extended Guarantee period.
- 1.6. Where claims on inspection reveal goods are in normal working order, Reptile One will request reimbursement of all reasonable costs incurred.

#### 2.0. Other Terms and Conditions – Extended Guarantee

- 2.1. The Extended Guarantee period is for an additional 1 Year and commences on expiration of the standard guarantee period.
- 2.2. Application for Extended Guarantee is FREE of any registration cost to the purchaser on completion of the Extended Guarantee questionnaire which may be found with the Reptile One goods purchased or on the applicable Reptile One website. (See below)
- 2.3. Upon receipt and acceptance of the questionnaire, Reptile One will forward a Certificate of Extended Guarantee to the purchaser.
- 2.4. For more information on how we collect, hold, use and disclose personal information provided to us, please refer to our Privacy Statement on the Reptile One websites or write to our Privacy Officer, in your country of purchase\* (refer over page).
- 2.5. Where Reptile One determines goods are being used in a manner contrary to the instructions, specifications or this Guarantee, Reptile One reserves the right to terminate Extended Guarantee for such goods and will provide written notice to the purchaser.

#### 3.0. Exclusions and Limitations

Where permitted by local law, the following exclusions and limitations apply in regard to the Guarantee:

- 3.1. Goods claims where fault is due to, but not limited by a) misuse b) neglect c) abuse d) fire or flood e) normal wear and tear f) accidental breakage g) Acts of God h) mains voltage fluctuation or supply problems i) connection to any voltage other than what is stated on the rating plate j) modification or tampering to electrical cord or plug, k) vermin, insects or foreign object l) liquid spillage or submersion of goods where goods are not designed to sustain such use or duress.
- 3.2. Where inspections reveal goods are in normal working order including where noise or vibration is consistent with normal goods operation.
- 3.3. Attempted repairs or modifications by unauthorised persons, including but not limited to modifications to the electrical lead or plug.
- 3.4. Where the goods factory rating plate has been removed, altered, damaged or is rendered illegible.
- 3.5. Where goods are not installed, operated or maintained in accordance with Reptile One's goods instructions, specifications or this Guarantee.
- 3.6. Replacement or repair of worn consumables or replacement of lost goods, parts or components.
- 3.7. Costs associated with goods transportation, removal, installation, postage or cost of insurance.
- 3.8. Any damage incurred whilst installing, transporting or moving the goods.
- 3.9. Subject to certain local statutory rights and obligations to the contrary, and this guarantee shall not affect those rights or obligations, where, to the full extent permitted by law: 1. all express and implied warranties and conditions under statute or general law, are expressly excluded and Reptile One, where permitted, will limit liability as follows and at Reptile One's option to: in regard to goods either a) the replacement of goods or supply of equivalent goods b) the repair of goods or the cost of replacing the goods or of acquiring equivalent goods OR in regard to services either c) the re-supply of services d) the cost to re-supply services.
2. Reptile One will not be liable for any loss or damage, including consequential loss or damage either directly or indirectly, or for any incidental expenses, of any kind, and in any way whatsoever.

(1) Consumables include items such as fluorescent tubes, starters, perspex cover and other plastic parts.