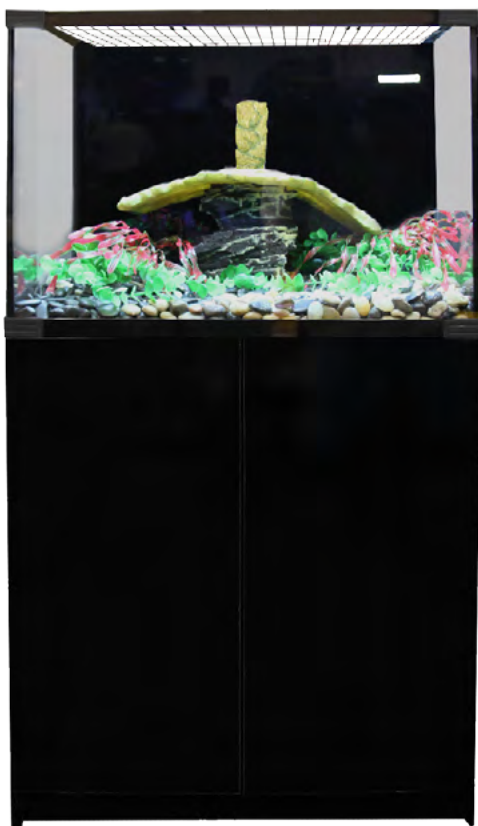




Next Best Thing to Nature!



Turtle Eco



46132

46171BK

Reptile One's Turtle Eco Turtle Tanks are the perfect home for your pet turtles. These tanks include a wire mesh lid which allows the use of UV producing fluorescent lighting while keeping the enclosure secure.

The Turtle Eco also features a back filter system with included sponge and ceramic noodles, a glass heater to maintain ideal temperature for your turtle and a fixed floating landing dock for your turtle to bask on.

Available in Michelangelo 60cm, Donatello 90cm and Leonardo 120cm.

Matching ROC cabinets available. Sold separately.

Suitable for: Turtles

FEATURES & BENEFITS:

- Back filter system with included sponge and ceramic noodles.
- Glass heater included
- Fixed floating landing dock made of turtle safe material included for your turtle to bask on
- Secure wire mesh lid for added security



46132



46188



46189

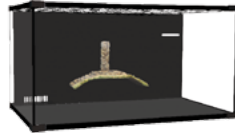
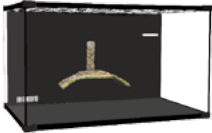
SUITABILITY GUIDE





PRICE & TECHNICAL INFORMATION

Code	Description	Dimensions	Inner	Carton
46132	Turtle Eco 60 Glass Tank 60 L X 45 D X 45cm H	60 L X 45 D X 45cm H	0	1
46188	Turtle Eco 90 Glass Tank 90 L X 45 D X 50cm H	90 L X 45 D X 50cm H	0	1
46189	Turtle Eco 120 Glass Tank 120 L X 60 D X 50cm H	120 L X 60 D X 50cm H	0	1



46132



46188



46189

FILTER MEDIA REPLACEMENT

Code	Description	Inner	Carton
25618S	Sponge - Turtle Eco 60 618S	0	1
25619S	Sponge - Turtle Eco 90 & 120 619Sa	0	1



25618S



25619S

MATCHING ROC CABINETS AVAILABLE INCLUDE:

Code	Description	Dimensions	Inner	Carton
46171BK	Cabinet ROC-600, 60x45cm , 76cmh - Gloss Black	60W x 45D cm x 76cm H	0	1
46171AH	Cabinet ROC-600, 60x45cm , 76cmh - Walnut	60W x 45D cm x 76cm H	0	1
46174BK	Cabinet ROC-900, 90x45cm , 76cmh – Gloss Black	90W x 45D cm x 76cm H	0	1
46174AH	Cabinet ROC-900, 90x45cm , 76cmh - Walnut	90W x 45D cm x 76cm H	0	1
46177BK	Cabinet ROC-1206, 120x60cm , 76cmh – Gloss Black	120W x 60D cm x 76cm H	0	1



46171BK



46171AH



46174BK



46174AH



46177BK



ROC CABINET RANGE



46171BK



46171AH



46174BK



46174AH



46177BK

NOTES, HINTS & TIPS:

- It is important to remember that due to the feeding behaviour of turtles, regular gravel cleaning with an Aqua One ProVac Gravel Vac (#20132-20134) will help to maintain water quality. An Aqua One Floating Magnetic Glass Cleaner (#10100 – 10102) can be used to keep the sides of the turtle tank clean.
- To help maintain a clean and healthy turtle tank, Reptile One recommends using the Reptile One Turtle Sludge Remover (#46224). The Turtle Sludge Remover produces enzymes that convert pollutants into useful products that help sustain a healthy, balanced aquarium.
- Ensure any gravel being used has been washed. When adding gravel to the turtle tank, **DO NOT** pour the gravel in, add it by scooping into the bottom of the turtle tank to avoid damaging the glass.

WARNING AND DISCLAIMERS:

- Fill the tank to the recommended minimum and maximum water level lines as indicated on the tank.
- Floating turtle docks will move with the water levels in your tank. **DO NOT IMMOBILISE** the turtle dock.

